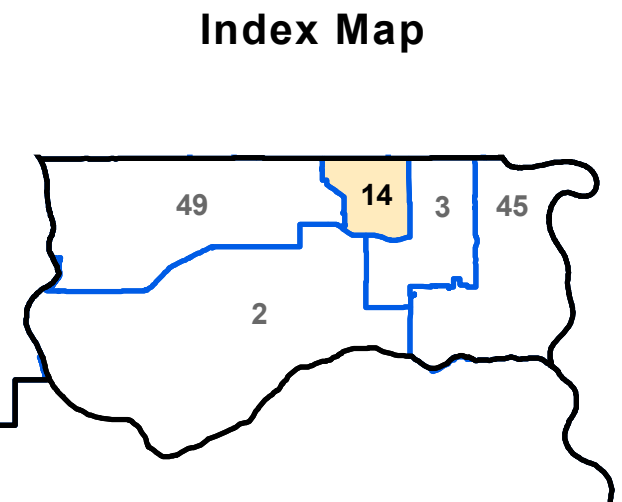
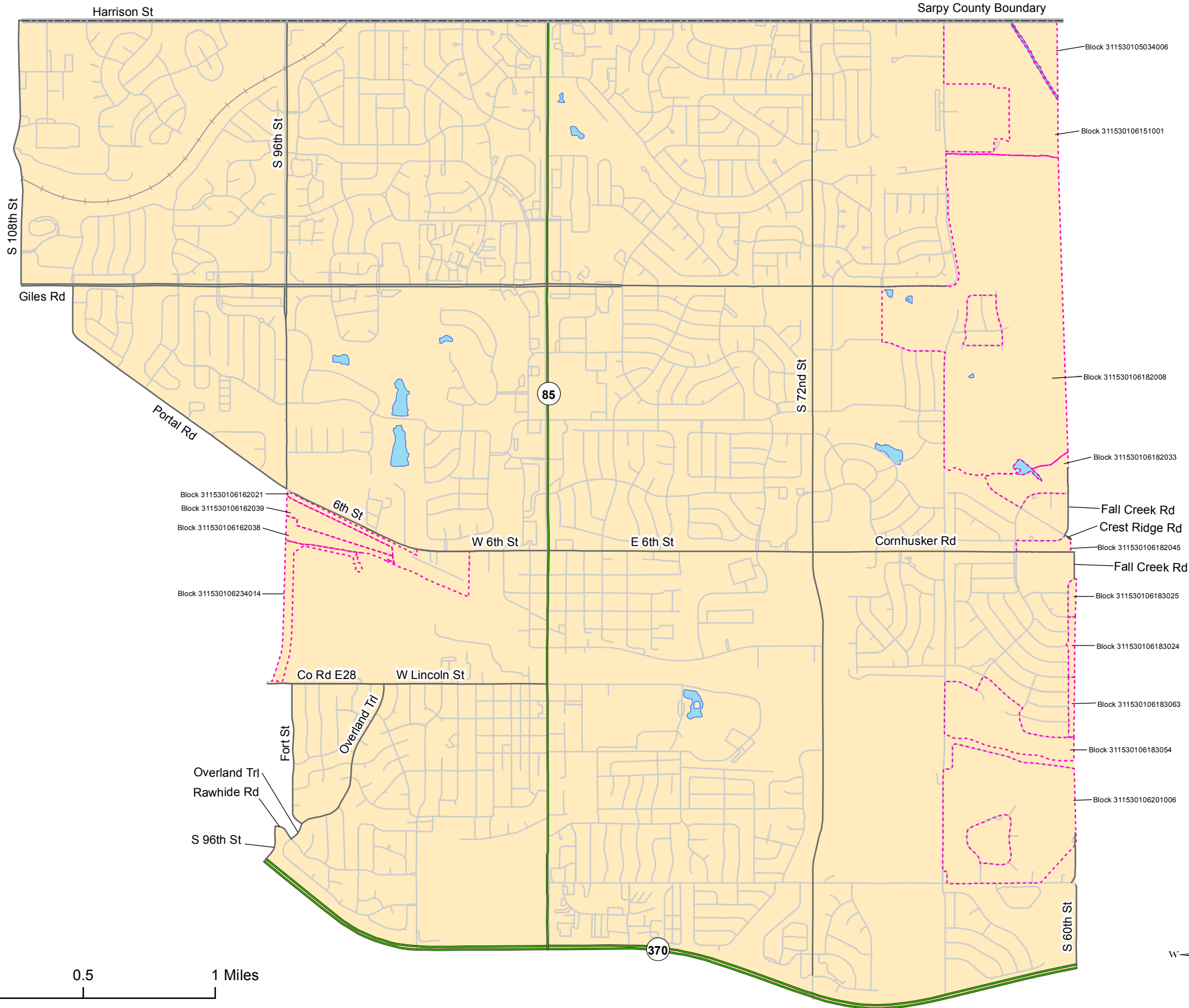


Legislative District 14 - LB 703 (2011)

LEG11-14



District 14 Statistics

	Total Population	Percent Population	Voting Age	Percent Voting Age
White	32,438	85.96%	23,940	88.42%
Black	1,250	3.31%	835	3.08%
Hispanic	2,160	5.72%	1,236	4.56%
Native Amer.	150	0.39%	95	0.35%
Asian	964	2.55%	673	2.49%
Total Minority	5,299	14.04%	3,136	11.58%
TOTAL	37,737	100.00%	27,076	100.00%

Population Deviation = 465
Percent Deviation = 1.25%

Symbology

- Interstates
- U.S. Highways
- State Highways
- Roads
- Railroads
- Legislative District
- County Boundary
- City or Village

LEG 43002-E (Committee Adoption, 5-4-2011)
U.S. Bureau of the Census (Population Data), 2010

Geographic Information Systems
Map Created by: Trisha Schlake and Jack Dohrman
Source: U.S. Census Bureau
Date Created: 5-11-2011

