

NEBRASKA

Good Life. Great Mission.

DEPT. OF HEALTH AND HUMAN SERVICES



Jim Pillen, Governor

July 30, 2025

The Honorable Brian Hardin
Members of the Health & Human Services Committee
Nebraska Legislature
P.O. Box 94604
Lincoln, NE 68509

The Honorable Robert Clements
Members of the Appropriations Committee
Nebraska Legislature
P.O. Box 94604
Lincoln, NE 68509

Subject: Outcomes Relating to Expenditures and Change or Movement of Funds Relating to
Child Welfare Report

Dear Chairman Hardin and Chairman Clements:

Neb. Rev. Stat. § 81-3133(1)(b) requires the Department of Health and Human Services (DHHS), Division of Children and Family Services, to report on its expenditures for each quarter and the outcomes related to such expenditures to the Appropriations and Health and Human Services Committees. Pursuant to this law, DHHS is submitting a report of these expenditures and related outcomes for the quarter beginning April 1, 2025, through June 30, 2025.

Additionally, the statute requires that the report identify any changes or movement of funds between subprograms in excess of \$250,000 relating to child welfare in Budget Program 347 or Budget Program 354. During the period of this report, there were no changes or movement of funds between subprograms related to child welfare in Budget Program 354.

Sincerely,

Alyssa Bish, Ph.D.
Director, Division of Children and Family Services

Attachment

Division of Children and Family Services

Outcomes Relating to Expenditures and Change or Movement of Funds Relating to Child Welfare Report

July 2025

Neb. Rev. Stat. § 81-3133(1)(b)

Expenditures

The Division of Children and Family Services (CFS) child welfare expenditures for the period of April 1, 2025, through June 30, 2025, are listed on pages two and three of this report.

Movement of Funds

There were no changes or movement of funds in excess of \$250,000 between subprograms related to child welfare in Budget Program 354 during the period of this report.

Outcomes

Outcomes related to the expenditures in this report are derived from Children's Outcomes Measured in Protection and Safety Statistics (COMPASS). COMPASS measures reflect federal performance indicators that DHHS is held accountable for by the Federal Administration for Children and Families. Outcome measures can be found on pages four through nine of this report.

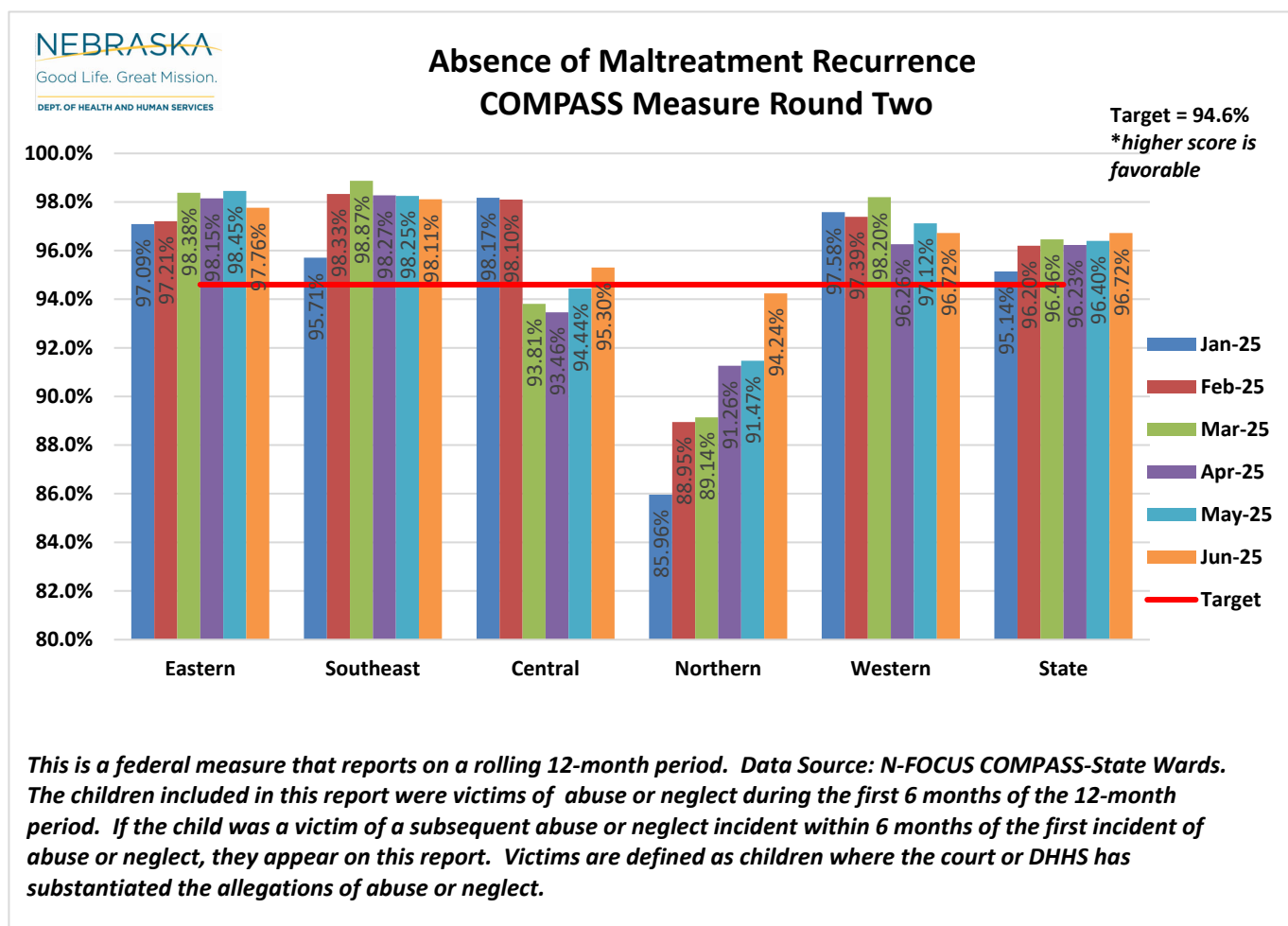
Ongoing updates of the COMPASS measures are posted on the Department website at <https://dhhs-cfscompass.ne.gov/CFSCompass/>. Each outcome report identifies the outcome measurement and provides a brief description of the measurement, numerical data by month for the State and each of the DHHS Service Areas, and the federal outcome measurement target. Each outcome report also provides a graph to depict the data over time. Measurement definitions and definitions of composite scores are included on each graph.

April – June 2025 CHILD WELFARE EXPENDITURES

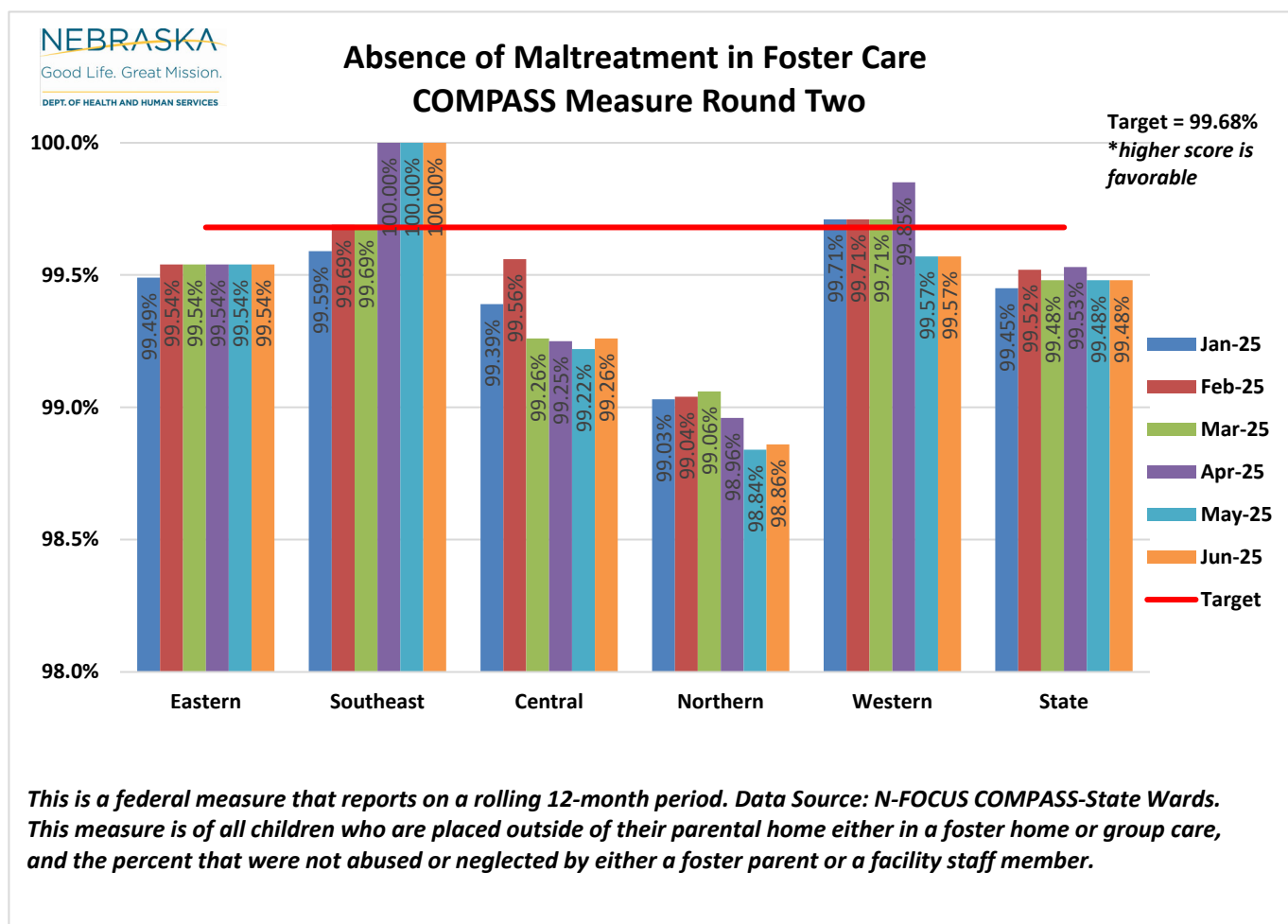
CHILD WELFARE AID	EXPENDITURES
17 Post-Adoption Guardianship	\$320,580
General Fund	\$320,580
18 Protection and Safety	\$530,754
General Fund	\$530,754
Federal Fund	\$0
30 IV-E Foster Care	\$8,930,506
General Fund	\$4,662,650
Federal Fund	\$4,267,856
31 IV-E Adoption Assistance	\$12,962,108
General Fund	\$5,509,577
Federal Fund	\$7,452,531
32 IV-E Guardianship	\$132,208
General Fund	\$62,863
Federal Fund	\$69,345
34 Subsidized Adoption	\$702,126
General Fund	\$702,126
Federal Fund	\$0
35 Domestic Violence Program	\$1,021,184
General Fund	\$388,893
Federal Fund	\$632,291
36 Education Assistance	\$4,713,426
General Fund	\$4,713,426
37 Subsidized Guardianship	\$2,082,158
General Fund	\$2,082,158

April – June 2025 CHILD WELFARE EXPENDITURES	
48 Child Welfare	\$36,332,909
General Fund	\$31,221,512
Federal Fund	\$5,111,397
49 Tribal Child Welfare	\$1,169,377
General Fund	\$847,878
Federal Fund	\$321,499
50 Subsidized Independent Living	\$117,879
General Fund	\$117,879
51 IV-E Independent Living	\$17,424
General Fund	\$7,402
Federal Fund	\$10,022
52 Adoption and Safe Families	\$201,014
General Fund	\$0
Federal Fund	\$201,014
Child Welfare Total	\$69,233,651
General Fund	\$51,167,696
Federal Fund	\$18,065,955

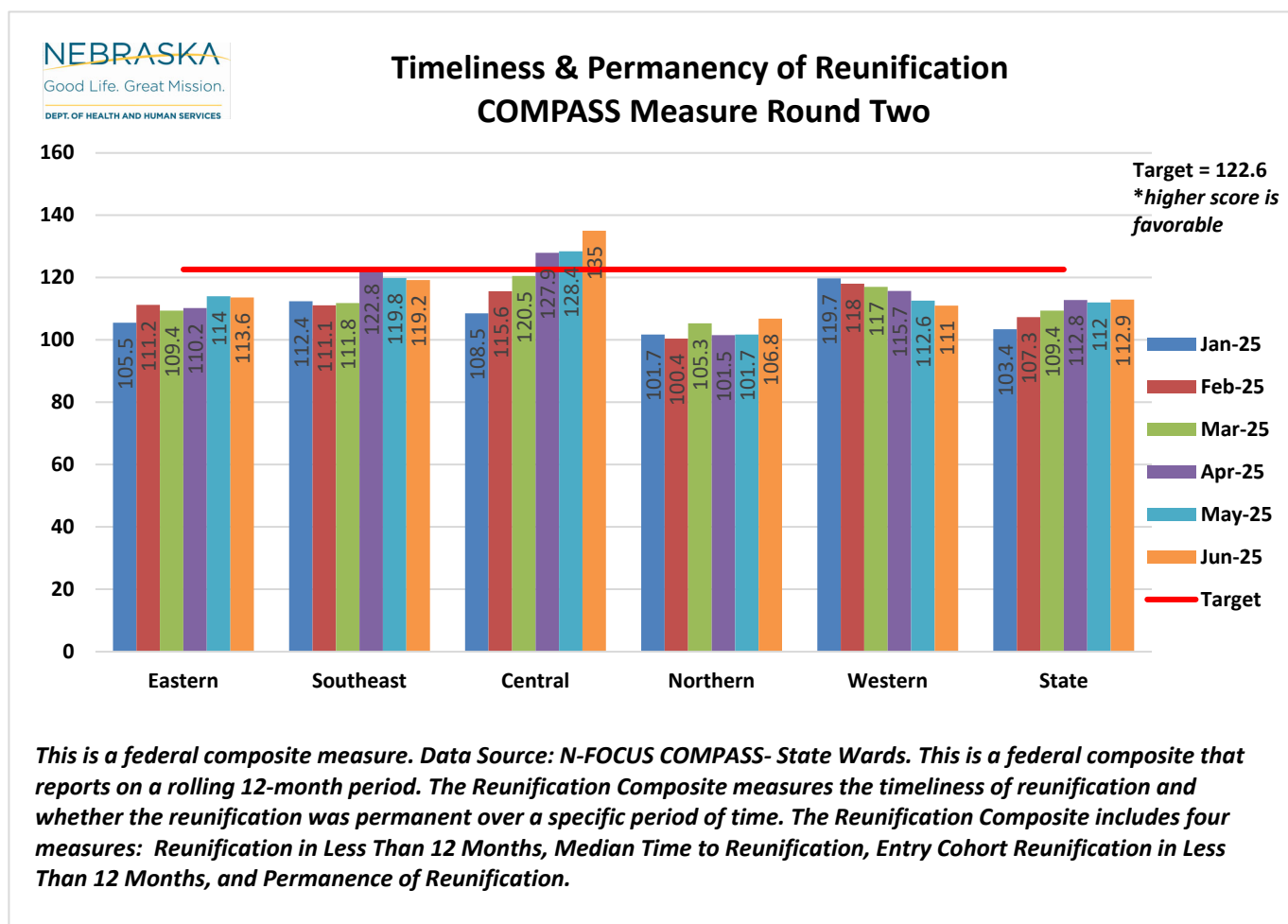
COMPASS Measures



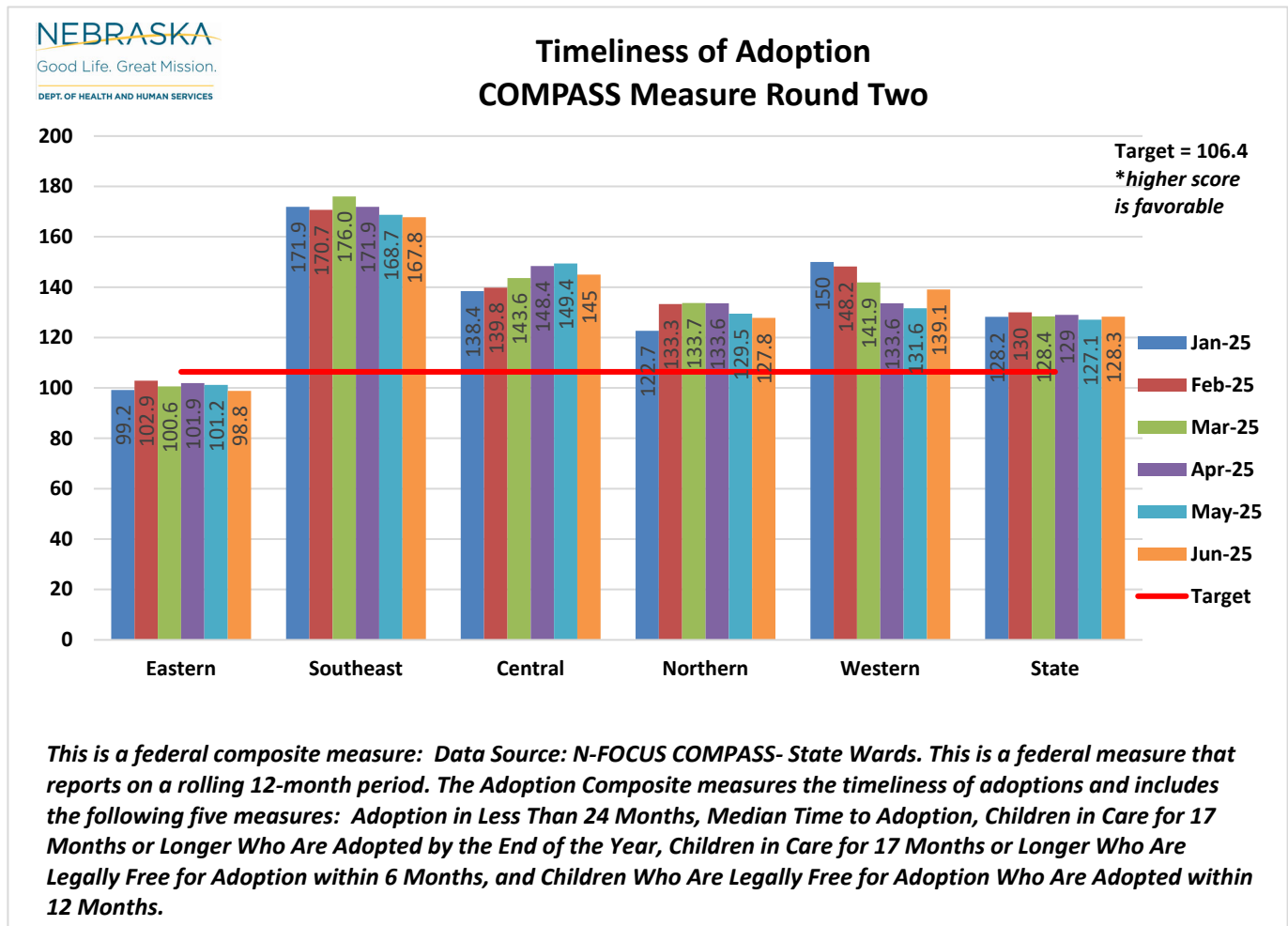
COMPASS Measures



COMPASS Measures

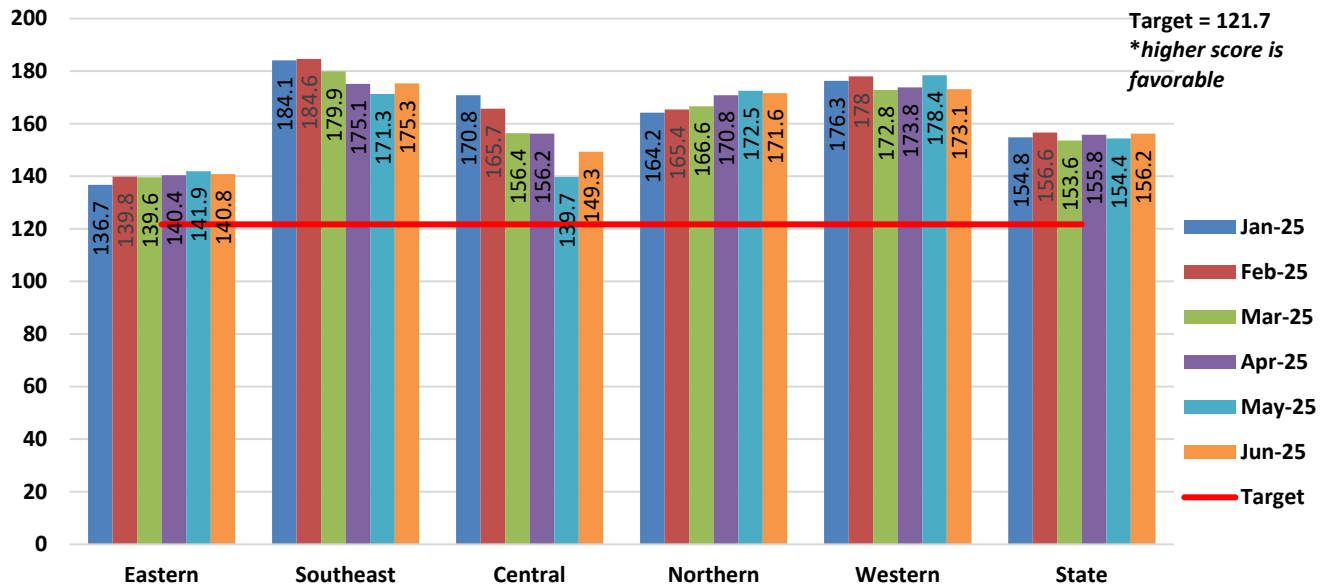


COMPASS Measures



COMPASS Measures

Permanency for Children in Foster Care COMPASS Measure Round Two



This is a federal composite measure that reports on a rolling 12-month period. Data Source: N-FOCUS COMPASS-State Wards. The Permanency Composite measures the frequency that permanency is achieved for children and youth who have been in care for longer periods of time. Permanency is defined as exiting care to reunification, adoption or guardianship. The composite includes three measures: 1. Exits to Permanency Prior to the Child's 18th Birthday for Children in Care for 24 More Months or More; 2. Exits to Permanency for Children Who Are Free for Adoption; and 3. Children Emancipated Who Were in Foster Care for 3 Years or More.

COMPASS Measures

