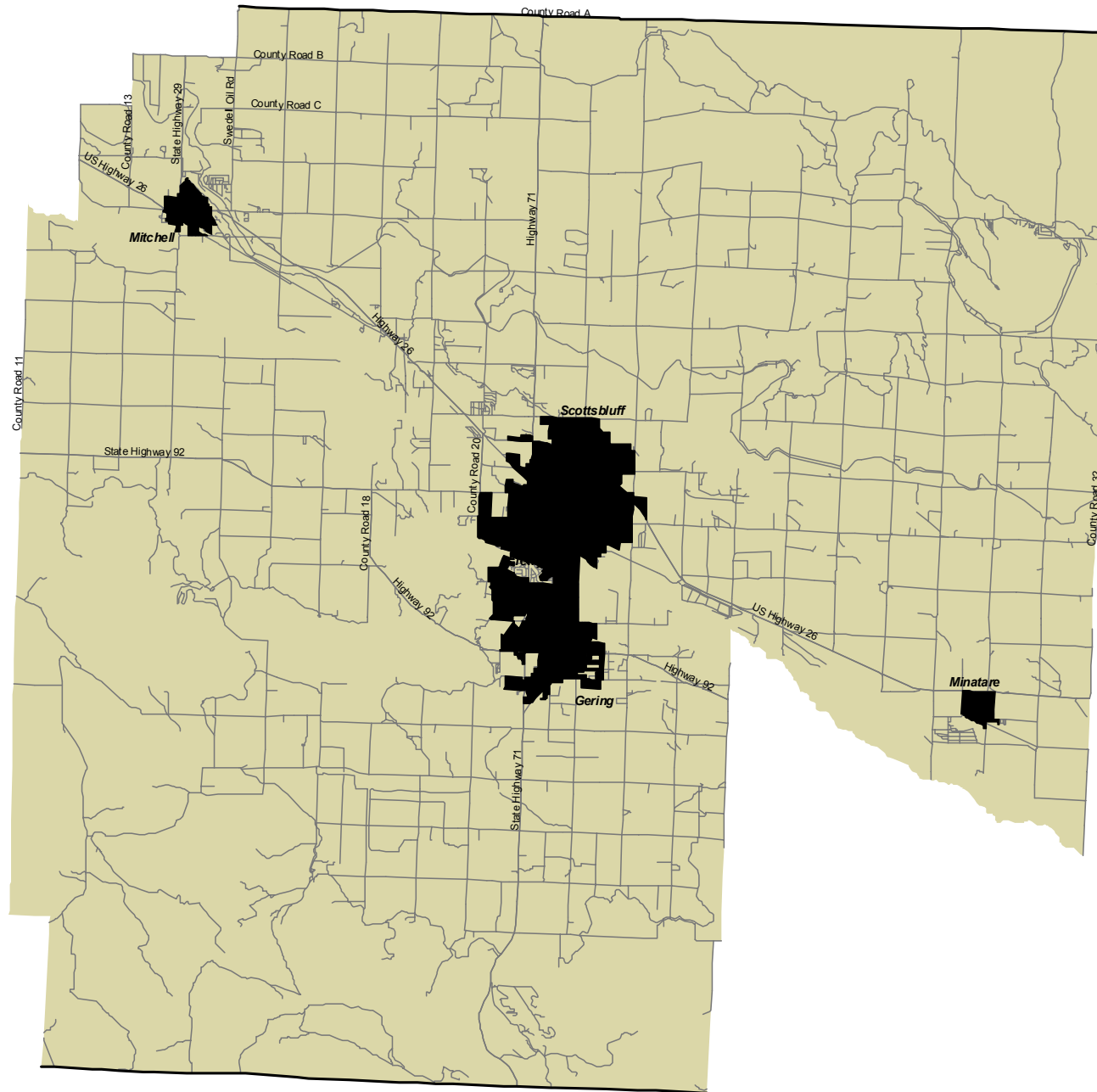
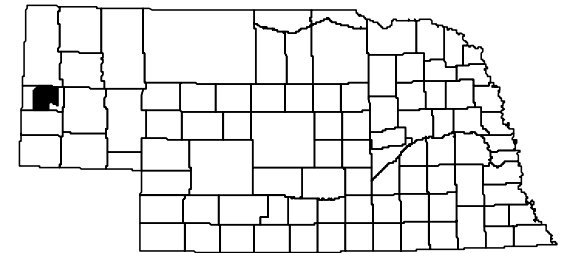


Legislative District 48 - LB 852 (2001)



Index Map



District 48 Statistics

	Total Population	Percent Population	Voting Age	Percent Voting Age
White	26,250	79.00	20,349	82.81
Black	82	0.25	53	0.22
Hispanic	5,914	17.80	3,607	14.68
Native Amer.	539	1.62	303	1.23
Asian	174	0.52	135	0.55
Pacific Islndr	11	0.03	6	0.02
Other	16	0.05	6	0.02
Multiple races	242	0.73	114	0.46
TOTAL	33,228	100.00	24,573	100.00
	Population deviation		-1,696	
	Percent deviation		-4.86	

Symbols

- County Boundary
- Roads, Highways, and Interstates
- Legislative District
- City or Village

Sources

- LB 852 (2001)
- U.S. Bureau of the Census, PL94-171 (Population data), 2000
- U.S. Bureau of the Census, TIGER/Line files, 2000

