

August 28, 2012

Patrick O'Donnell, Clerk of the Legislature
State Capitol, Room 2018
PO Box 94604
Lincoln, NE 68509

Dear Mr. O'Donnell:

Legislative Bill 820 of the 102nd Legislative Session of 2012 requires the IV-E Demonstration Committee to report on its activities to the Health and Human Services Committee on or before September 1, 2012.

The attached report provides a progress summary regarding committee activities to date. The report includes meeting agendas, minutes, and data from the meetings in June, July and August 2012.

Respectfully,



Thomas D. Pristow, MSW, ACSW, Director
Division of Children and Family Services
Department of Health and Human Services

Attachment

REPORT FOR:	Nebraska Legislature, Health and Human Services Committee
REPORT DATE:	September 1, 2012
LEGISLATIVE BILL	LB 820, Sections 1, 2, & 3
COMMITTEE NAME	IV-E Demonstration Project
CONTACT PERSON:	Sara Goscha, DHHS CFS Special Projects 402-471-8404

General Information

LB 820 requires the Department to appoint a IV-E Demonstration Committee. The committee shall review, report and provide recommendations regarding the application for a demonstration project to apply for a IV-E Waiver. This effort may include hiring a consultant. The committee will review the current Title IV-E participation and penetration rates, review strategies and solutions for raising Nebraska's participation rate and reimbursement for Title IV-E in child placement, case management, replacement, training, adoption, court findings, and proceedings and recommend specific actions for addressing barriers to participation and reimbursement. The committee shall create an implementation plan and time line for making application for a Title IV-E waiver. The Implementation plan shall support and align with the goals of the statewide strategic plan requirement in LB 821.

Progress Summary

The Nebraska Children's Commission appointed a voting member of the Commission to this committee, as a co-chair. Gene Klein, Executive Director of Project Harmony joined the IV-E Demonstration Project Committee on August 8, 2012.

The IV-E Demonstration Project Committee met on:

- June 21, 2012
- July 13, 2012
- August 8, 2012

Minutes are attached from each meeting.

The Nebraska Public Meeting Calendar is being used for meeting notices.

DHHS established public web pages for the Commission activity, and posts final minutes for this committee on-line. <http://dhhs.ne.gov/Pages/childrenscommission.aspx>

Two sub-committees were formed at the June 21 meeting. These sub-committees are addressing the IV-E Penetration Rate and the Implementation Plan. These sub-committees meet approximately once per month. A great deal of data has been compiled for the sub-committees to evaluate.

AFCARS data in graphs and penetration rate information is enclosed for review.

Issues

No issues have been brought forward to date.

Recommendations

Both sub-committees continue to develop recommendations regarding the penetration rate and waiver implementation and timeframe as defined in LB 820. The sub-committee recommendations will be shared with the larger committee in October and November. Recommendations will be forthcoming in future reports.

Attachments:

1. June 21, 2012 minutes, final
2. July 13, 2012, minutes, final
3. August 8, 2012, minutes draft
4. AFCARS data
5. Penetration Rate data

1. Call to Order

Sara Goscha called the meeting to order at 9:00 am. An announcement of the placement of the Open Meetings Act Information was made.

2. Roll Call, Members Present:

Jim Blue	Sara Goscha	Kevin R. Nelson
Jerry Davis	Judge Everett Inbody	Bill Reay
Sarah Forrest	Candy Kennedy	Corey Steel
		Vicky Weisz

Committee members absent: Sherri Dawson

Also in attendance: Scot Adams, Director of Behavioral Health, DHHS; Cynthia Brammeier, Special Projects, DHHS; and Kathie Osterman, Public Information Officer, DHHS.

3. Welcome and Introductions

Sara Goscha welcomed members to the Committee. Committee members made self-Introductions.

4. Approval of Agenda

A motion was made by Jerry Davis to approve the agenda as presented. Bill Reay seconded the motion. Voting yes: Jim Blue, Sara Goscha, Kevin R. Nelson, Jerry Davis, Judge Everett Inbody, Bill Reay, Sarah Forrest, Candy Kennedy, Corey Steel, Vicky Weisz. No opposition. Absent: Sherri Dawson. The motion carried.

5. Adopt Procedural Rules

A motion was made by Kevin Nelson to adopt Roberts Rules of Order for committee meetings. Sarah Forrest seconded the motion. Voting yes: Jim Blue, Sara Goscha, Kevin R. Nelson, Jerry Davis, Judge Everett Inbody, Bill Reay, Sarah Forrest, Candy Kennedy, Corey Steel, Vicky Weisz. No opposition. Absent: Sherri Dawson. The motion carried.

A motion was made by Jerry Davis to provide publication of public notice for future meetings using mail, or e-mail to committee members and the Nebraska public meetings calendar for the general public. Sarah Forrest seconded the motion.

Jerry Davis moved to amend the motion to include that DHHS issue a press release with future meeting dates, times and locations to print media. Sara Forrest seconded the motion to amend. Voting yes: Jim Blue, Sara Goscha, Kevin R. Nelson, Jerry Davis, Judge Everett Inbody, Bill Reay, Sarah Forrest, Candy Kennedy, Corey Steel, Vicky Weisz. Voting No: None. Abstaining: None. Absent: Sherri Dawson. The motion carried.

Voting yes on the original motion. Jim Blue, Sara Goscha, Kevin R. Nelson, Jerry Davis, Judge Everett Inbody, Bill Reay, Sarah Forrest, Candy Kennedy, Corey Steel, Vicky Weisz. Voting No: None. Abstaining: None. Absent: Sherri Dawson. The motion carried.

6. Presentation on open meetings / public records requirements

Sara Goscha, Special Projects Administrator for Children and Family Services, provided a presentation on the general guidelines for open meetings and public records requirements. By default a quorum for the committee is 6 members and for simple motions to carry, a majority of voting members present in the quorum is required.

7. Purpose of Committee

Sara Goscha presented information regarding the purpose of the committee, including the sections of LB 820 creating the committee and outlining committee tasks.

8. Background and Overview of IV-E Waiver

Sara Goscha presented two handouts: a power point presentation of IV-E requirements and components; and the Federal Memorandum outlining the IV-E Demonstration projects.

9. Creation of sub-committees:

a. IV-E Penetration Rate

A motion was made by Jerry Davis to establish the IV-E Penetration Rate Sub-Committee, seconded by Jim Blue.

A motion was made by Jim Blue to amend the motion to read that the IV-E Penetration Rate Sub-Committee include the following members: Vicky Weisz (Chair), Candy Kennedy, Cory Steel, Sarah Forrest, and Kevin Nelson; and may include outside subject matter expert members if permitted by Roberts Rules of Order and State Statute, which would be appointed by the Sub-Committee Chair. Sarah Forrest seconded the motion. Voting yes: Jim Blue, Jerry Davis, Sara Goscha, Candy Kennedy, and Sarah Forrest. Voting no: Kevin Nelson and Bill Reay. No abstentions. Absent: Sherri Dawson. The motion to amend carried.

Voting on the original motion, voting yes: Jim Blue, Sara Goscha, Kevin R. Nelson, Jerry Davis, Judge Everett Inbody, Bill Reay, Sarah Forrest, Candy Kennedy, Corey Steel, Vicky Weisz. No opposition. Absent: Sherri Dawson. The original motion carried.

A motion was made by Jerry Davis to appoint the following members to the IV-E Penetration Rate Sub-Committee: Vicky Weisz (Chair), Candy Kennedy, Cory Steel, Sarah Forrest, and Kevin Nelson. Kevin Nelson seconded the motion. Voting yes: Jim Blue, Sara Goscha, Kevin R. Nelson, Jerry Davis, Judge Everett Inbody, Bill Reay, Sarah Forrest, Candy Kennedy, Corey Steel, Vicky Weisz. No opposition. Absent: Sherri Dawson. The motion carried.

b. IV-E Waiver Implementation Plan

A motion was made by Kevin Nelson to create the IV-E Demonstration Project Implementation Plan and Timeline Sub-Committee. Sarah Forrest seconded the motion. Voting yes: Jim Blue, Sara Goscha, Kevin R. Nelson, Jerry Davis, Judge Everett Inbody, Bill Reay, Sarah Forrest, Candy Kennedy, Corey Steel, Vicky Weisz. No opposition. Absent: Sherri Dawson. The motion carried.

A motion was made by Kevin Nelson to appoint the following members to the IV-E Demonstration Project Implementation and Timeline Sub-Committee: Sara Goscha (Chair), Jim Blue, Sheri Dawson, Bill Reay, and Jerry Davis, and may include outside subject matter expert members if permitted by Roberts Rules of Order and State Statute, which would be appointed by the Sub-Committee Chair, Jerry Davis seconded the motion. Voting yes: Jim Blue, Sara Goscha, Kevin R. Nelson, Jerry Davis, Judge Everett Inbody, Bill Reay, Sarah Forrest, Candy Kennedy, Corey Steel, Vicky Weisz. No opposition. Absent: Sherri Dawson. The motion carried.

10. July 1 Report Draft approval

A motion was made by Bill Reay to approve the July 1 Draft report to the Children's Commission and the Legislative HHS Committee with two changes: 1) the fifth sentence should read "The committee shall create an implementation plan and time line for making application for a Title IV-E waiver." 2) Include sub-committee member names, seconded by Sarah Forrest Voting yes: Sara Goscha, Kevin R. Nelson, Jerry Davis, Judge Everett Inbody, Bill Reay, Sarah Forrest, Candy Kennedy, Corey Steel, Vicky Weisz. No opposition. Absent: Jim Blue, and Sherri Dawson. The motion carried.

11. Future Meeting Dates

Sara Goscha reviewed tentative future meeting dates with members. All meetings are scheduled in the Nebraska State Office Building - Lower Level A, Lincoln, NE.

- July 13, 9-11 AM
- August 8, 1-3 PM
- September 7, 9-11 AM
- October 10, 9-11 AM
- November 16, 9-11 AM
- The November meeting may be moved to November 8 due to scheduling conflicts. Sara will re-schedule the meeting and share the information as soon as possible.

12. Future Reports due:

Sara Goscha reviewed future report deadlines of September 15, November 1, and the final report on December 15, 2012

13. Adjourn

Kevin Nelson moved to adjourn the meeting at 10:15 am. Bill Reay seconded the motion. The meeting was adjourned at 10:15 am.

Friday, July 13, 2012

9:00 AM CST

Nebraska State Office Building, Lower Level A

Lincoln, Nebraska

1

1. Call to Order

The meeting was called to order by Sara Goscha at 9:04AM. An announcement of the placement of the Open Meetings Act Information was made. A public copy of the agenda is posted at the back of the room.

2. Roll Call

Committee members present:

Jerry Davis

Judge Inbody

Bill Reay

Sarah Forrest

Candy Kennedy-Goergen

Corey Steel

Sara Goscha

Kevin Nelson

Vicky Weisz

Absent: Jim Blue, Sheri Dawson

DHHS Staff: Sue Adams, Cynthia Brammeier

3. Sara Goscha welcomed members.

4. Jim Blue joined the meeting at this time.

5. Approval of Agenda

Jerry Davis moved to accept the agenda as presented, Kevin Nelson seconded the motion. Voting Yes. Jim Blue, Jerry Davis, Sarah Forrest, Sara Goscha, Kennedy-Goergen, Kevin Nelson, Bill Reay. Absent: Sheri Dawson.

6. Public Comment: None.

7. Old Business

a. Report from sub-committees:

- IV-E Penetration Rate - Vicky Weisz

Vicky presented a written report of reports the sub-committee is evaluating, and a request for new reports of unduplicated case information from the Department.

Sarah Forrest moved to request data for the Sub-Committee, from the Department, within 30 days; Candy Kennedy-Goergen seconded the motion. Voting Yes: Jim Blue, Sarah Forrest, and Candy Kennedy-Goergen. Voting No: Sara Goscha, Kevin Nelson, Bill Reay., Abstaining: Jerry Davis. The motion failed.

Kevin Nelson moved to submit the Sub-Committee's data request to the Department for delivery by the next meeting, or DHHS to make an estimate of when the data can be delivered at the next meeting, Sara Goscha seconded the motion. Voting yes: Jerry Davis, Sara Goscha, and Kevin Nelson. Voting No: Bill Reay. Abstaining: Jim Blue, Sarah Forrest, and Candy Kennedy-Goergen. The motion failed.

Kevin Nelson moved to submit the Sub-Committee's data request to the Department for delivery by the next meeting, or DHHS to make an estimate of when the data can be delivered at the next meeting. Sarah Forrest seconded the motion. Voting Yes: Jim Blue, Jerry Davis, Sarah Forrest, Sara Goscha, Candy Kennedy-Goergen. Voting No: Bill Reay. The motion passed.

Friday, July 13, 2012

9:00 AM CST

Nebraska State Office Building, Lower Level A

Lincoln, Nebraska

2

- IV-E Waiver Implementation Plan (Sara G.)
Sara reported on the Implementation Plan sub-committee progress to date. Reports being used are the existing AFCARS data, the Federal Report for 2008-2011 will be available in August and will be utilized. Evidence Based Practices were discussed and sub-committee members are reviewing those with a good fit.

8. New Business

The Committee's July 1 Report to the Legislature was submitted on June 27, a copy was provided to the committee.

The June and July minutes will be included on the August agenda for approval.

9. Next Meeting: The next meeting is scheduled for August 8, 1-3 pm, in the Nebraska State Office Building, Lower Level Room A.

10. Adjourn

Kevin Nelson moved to adjourn the meeting at 10:20AM, Jerry Davis seconded the motion. The meeting was adjourned at 10:20AM.

1. Call to Order

Sara Goscha called the meeting to order at 1:03pm. An announcement was made regarding the placement of the Open Meetings Act information in the back of the room. An agenda and packet were provided for the public in the back of the room. An announcement was made that Gene Klein, from Project Harmony, has been appointed as a new member and Co-Chair, by the Nebraska Children's Commission,.

2. Roll Call, Present:

Jim Blue	Sara Goscha	Kevin Nelson
Jerry Davis	Judge Everett Inbody	Bill Reay
Sheri Dawson	Candy Kennedy- Goergen	Vicky Weisz
Sarah Forrest		

Absent: Gene Klein Corey Steel

Staff Present: Cynthia Brammeier, DHHS John Danforth, Probation
Kathie Osterman, DHHS

3. Agenda

Kevin Nelson moved to accept the agenda as presented; it was seconded by Jerry Davis. Voting Yes: Jim Blue, Jerry Davis, Sarah Forrest, Sara Goscha, Candy Kennedy-Goergen, Kevin Nelson, Bill Reay. No abstentions. Absent: Gene Klein. The motion carried.

4. Approval of Minutes

a. June 21, 2012 Meeting Minutes

Jerry Davis moved to accept the June 21, 2012 minutes as presented, it was seconded by Jim Blue. Voting Yes: Jim Blue, Jerry Davis, Sarah Forrest, Sara Goscha, Candy Kennedy-Goergen, Kevin Nelson, Bill Reay. No abstentions. Absent: Gene Klein. The motion carried.

b. July 13, 2012 Meeting Minutes

Kevin Nelson moved to accept the July 13, 2012 minutes as presented, it was seconded by Sarah Forrest. Voting Yes: Jim Blue, Jerry Davis, Sarah Forrest, Sara Goscha, Candy Kennedy-Goergen, Kevin Nelson, Bill Reay. No abstentions. Absent: Gene Klein. The motion carried.

5. Public Comment

Sarah Helvey, Nebraska Appleseed, presented written information regarding a child welfare forum on Thursday September 13, 2012, 1-4pm. The Annie E. Casey Foundation will present information on Evidence Based Practices. The target audience is the Children's Commission, the IV-E Committee and other stakeholders. Registration is available at <http://neappl.es/sparcrsvp>.

6. Old Business

a. IV-E Penetration Rate: Vicky Weisz, Lead, indicated no meeting had taken place this month and they had no report. Data requested in July was provided on Friday August 3. This material was included in the meeting packet for today's meeting, and sent electronically to the committee.

- b. IV-E Waiver Implementation Plan: Sara Goscha, Lead, provided graphs and tables of data being evaluated by the sub-committee.
 - a. Trends in Entries, by age group, Removal reasons by age Group, Entry by Ethnicity, Age & Race, Entry & Exit Numbers, Re-entries, Out of Home Trends, Permanency, Absence of Maltreatment within 6 months, Poverty by County, Out of Home Care by County, and National comparisons of similar categories.
 - b. The sub-committee is evaluating the 10 Program Improvement Policies for the Waiver. These are listed in ACF-CB-IM-12-05, Issued 5/14/12. Specific Items of interest are #2 – Addressing Health & Mental Health Needs of Children in Foster Care; and #10 – Establishment of Specific Programs to Prevent Foster Care Entry or Provide Permanency.
 - c. The sub-committee is considering a target population of children under 2, & parents with substance abuse or alcohol related issues within 12 months. On the Structured Decision Making Risk Assessment Tool, this is Items #6 (youngest child under/over 2), & #12 (Primary caregiver has past or current alcohol or drug problem). Data will be analyzed to determine the number of cases this involves.
 - d. Differential Response may be supported by the Waiver.
 - e. Evidence Based Practices will be evaluated once the population and target is determined. Fidelity to the EBP will be critical.
 - f. Flexible funding has helped other states with Waiver efforts.

7. New Business

- a. The final July 1 Report to the Legislature was emailed to the committee
- b. A September 1, 2012 draft report to the Legislature was distributed to the committee. It was moved by Kevin Nelson to accept the preliminary report to the legislature as presented and described with attachments of meeting materials, it was seconded by Jerry Davis. Voting Yes: Jim Blue, Jerry Davis, Sarah Forrest, Sara Goscha, Candy Kennedy-Goergen, Kevin Nelson, Bill Reay. No abstentions. Absent: Gene Klein. The motion carried.

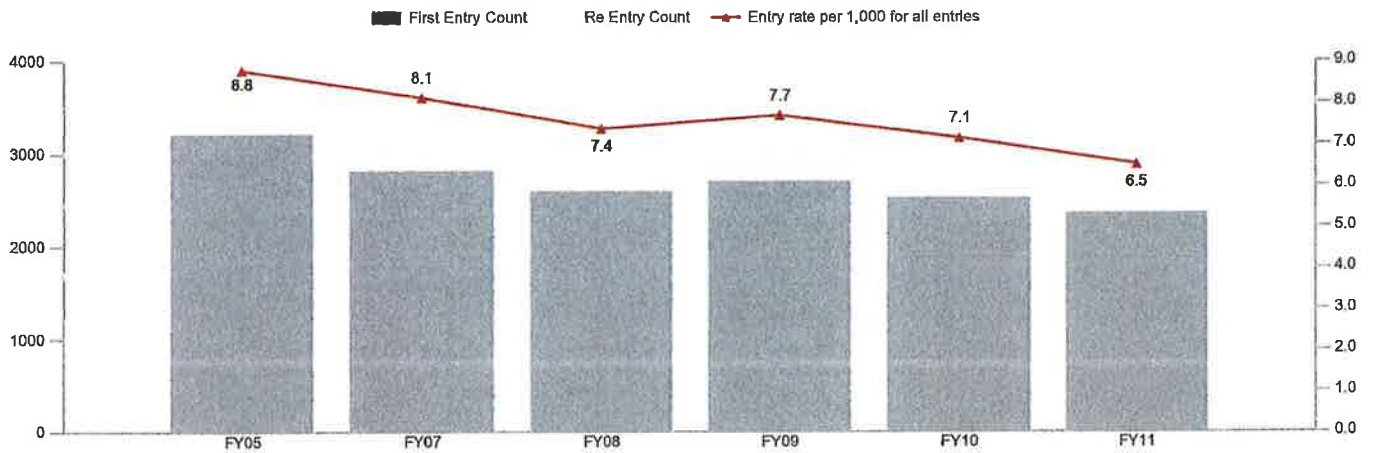
8. **Next Meeting**: September 7, 2012, 9AM, NSOB LL-A

9. Adjourn

Bill Reay moved to adjourn the meeting at 1:45pm, Kevin Nelson seconded the motion. The meeting was adjourned at 1:45pm.

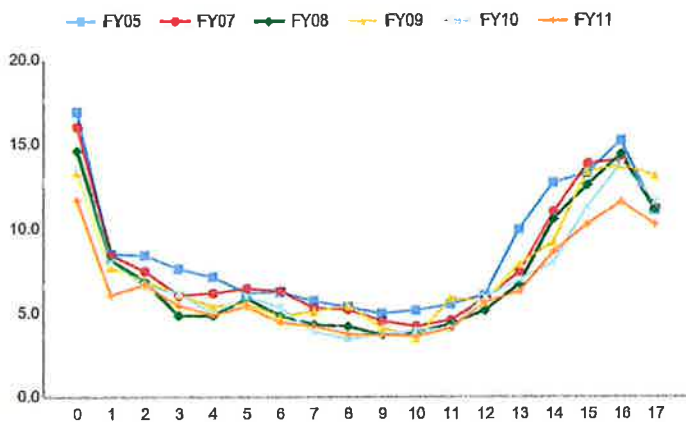
Nebraska Entries to Care

Trend in Entries (ages 0-17)

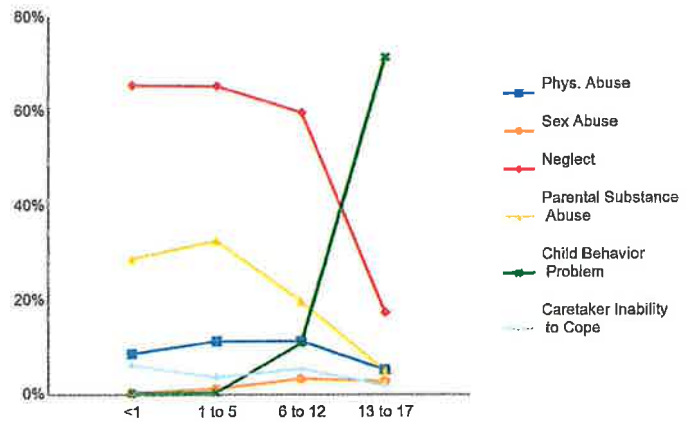


Entries by Age

Entry Rate by Age Group

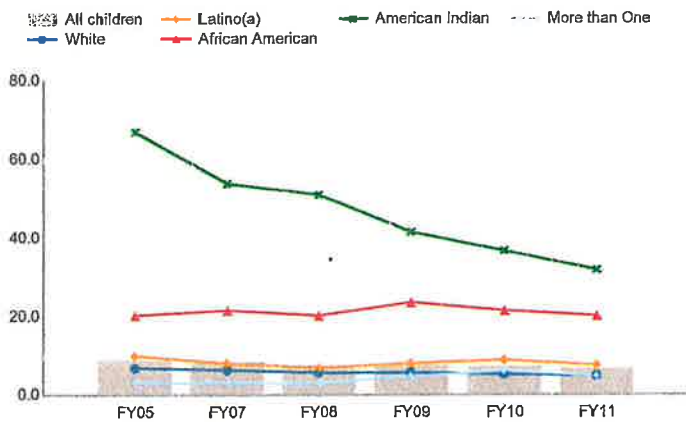


Removal Reason by Age Group, FY11

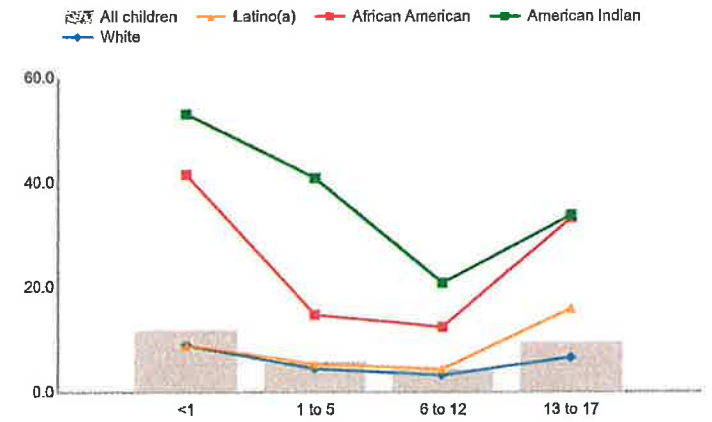


Entries by Race

Entry Rate by Race / Ethnicity (ages 0-17)*



Entry Rate by Race and Age, FY11*



* Trends are presented for racial/ethnic groups with at least 30 children entering care. Trends by race/ethnicity and age are presented for groups with at least 10 children entering care.

Jurisdiction Data Report

Casey Family Programs - confidential

3/7/2012

Produced by Data Advocacy

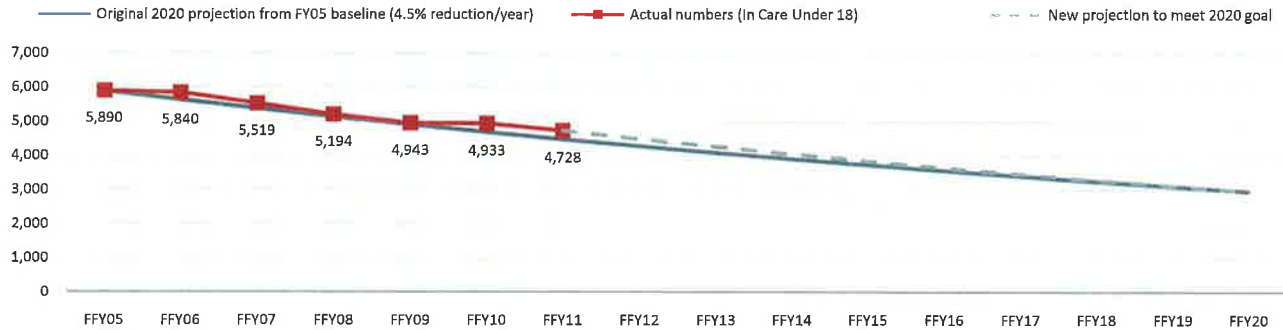
State:

Nebraska

State In Care Rank: 30

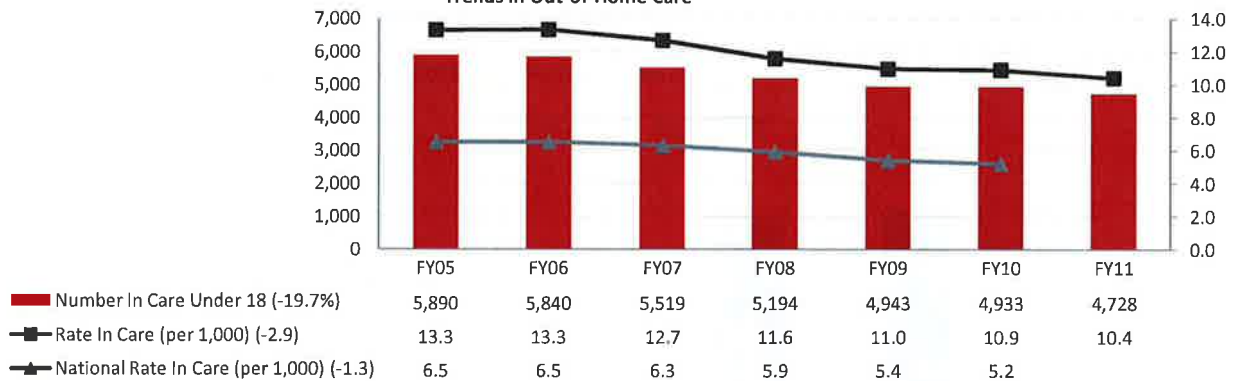
Overall Progress Towards 2020

Paths to Accomplishing 2020
(Goal: 2,945 children out-of-home by 2020)



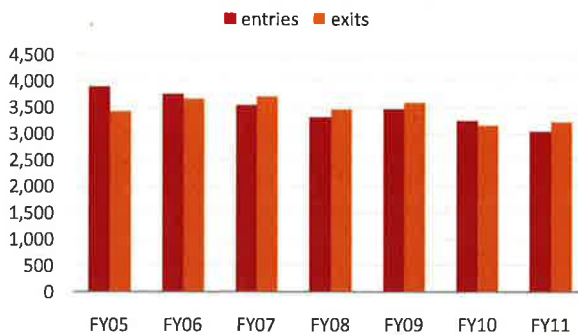
Reduction in the out-of-home care population in Nebraska has occurred at a rate less than the annual 4.5% reduction needed to achieve a 50% reduction (assuming a FY05 baseline). Given performance through FY11, if Nebraska continues to reduce its foster care population by at least 5.1% per year, the 2020 goal will be met.

Trends in Out-of-Home Care



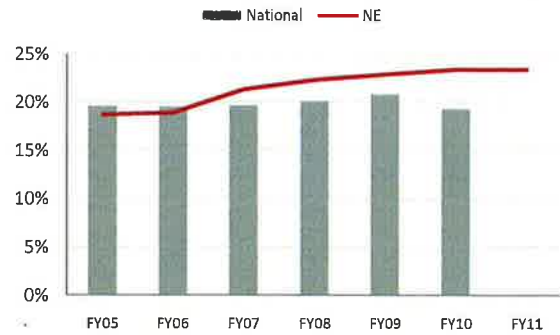
There has been an overall decrease of 19.7% since the FY05 baseline. The rate of children in out-of-home care (per 1,000 in the population) is an important benchmark because it controls for population changes. Overall, the rate has decreased considerably during the six year time period, however, it remains well above the national average.

Relationship Between Entries and Exits



Entries and exits fluctuated in Nebraska during the six year time period; entries exceeded exits in FY05-FY06 and FY10, while there were more exits than entries in FY07-FY09 and during FY11.

Children Re-Entering Care as Percent of All Entries



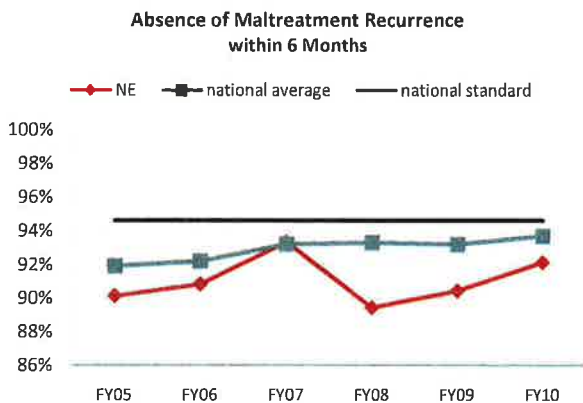
Since FY07, a percent of children re-entering care in Nebraska is higher than it is nationally.

Jurisdiction Data Report

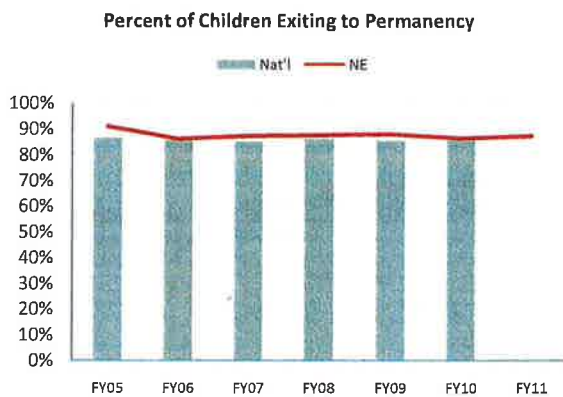
Casey Family Programs - confidential

3/7/2012

Produced by Data Advocacy



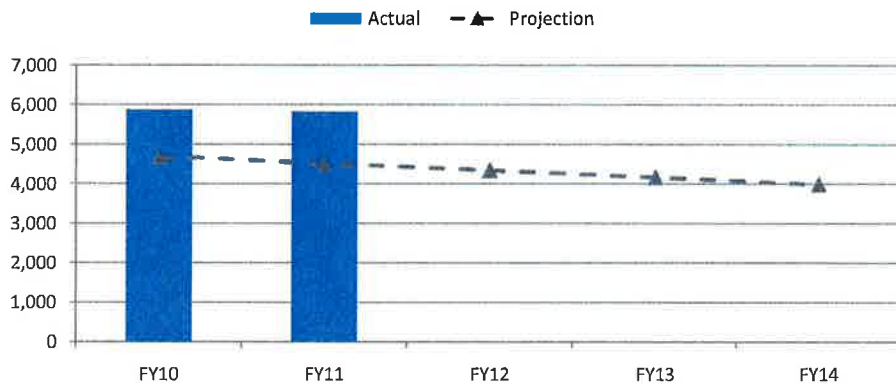
The absence of repeat maltreatment is an indicator of safety. The percent of children who did not experience repeat maltreatment in Nebraska is below both the national standard and the national average.



A slightly larger percent of children exit to permanency in Nebraska than do nationally.

State Specific Outcome Measures, as outlined in the 2011 contractual agreement:

↓ 15% reduction in the number of children in out-of-home care from 9/30/2010 to 3/31/2014



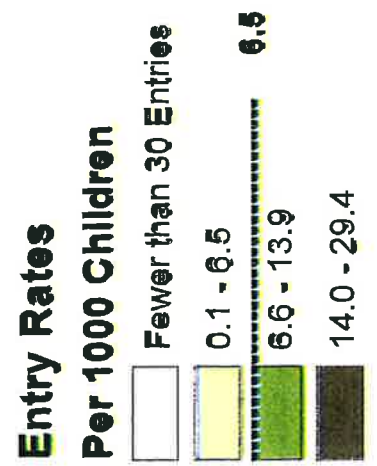
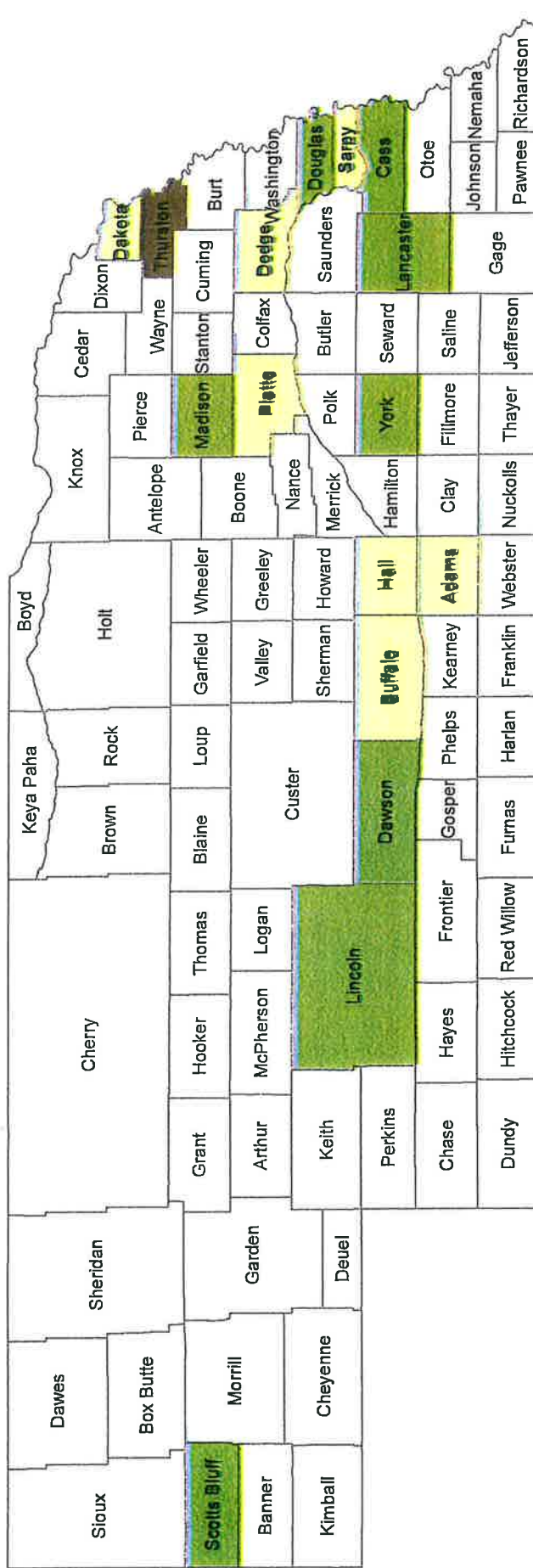
Data source (unless otherwise noted): AFCARS data sets, except maltreatment recurrence data which is from NCANDS

● baseline data only so far

↑ on target

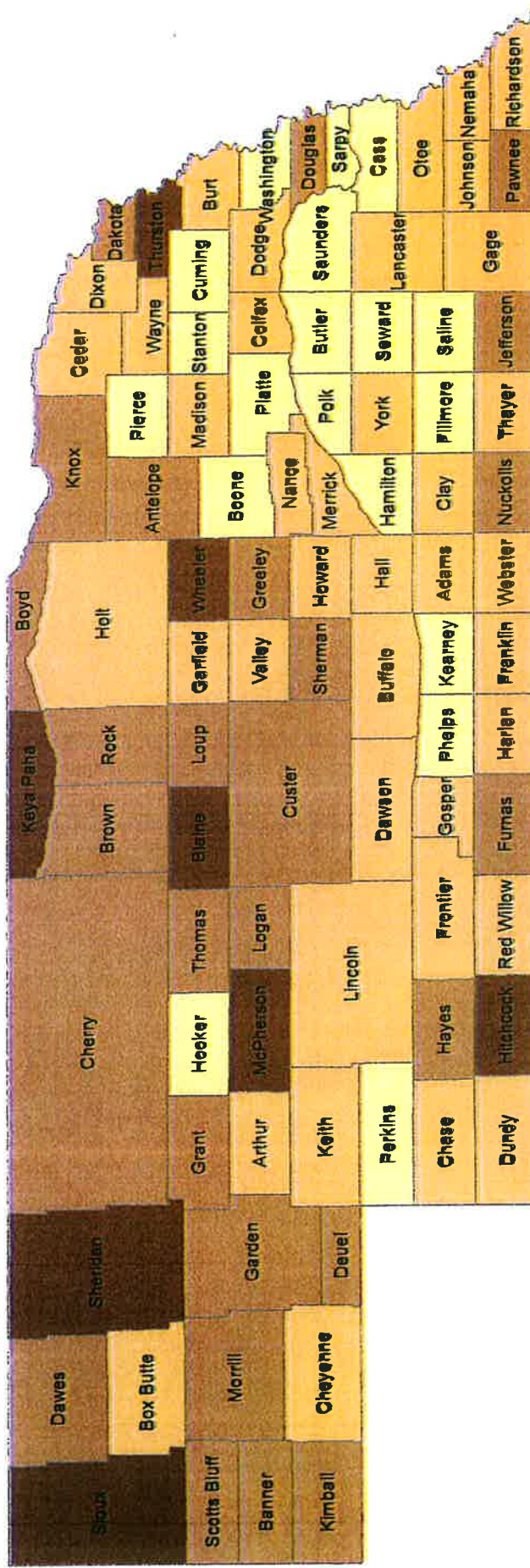
↓ not on target

Nebraska Entry into Out-of-Home Care Rates by County, FY11 (Children Under 18 Years of Age)



3/7/2012
Source: AFCARS and Claritas Population Estimates
Produced by Data Advocacy, Casey Family Programs

Nebraska Children (0-17) Living in Poverty, 2010



Poverty Percentages



Statewide Poverty 17.3%
 National Poverty 21.6%

Source: U.S. Census Bureau (Poverty Estimates)
 Produced by Data Advocacy, Casey Family Programs

3/7/2012

State Name	% of children living below the federal poverty level (0-17)	Victimization rate (unique subs/ind child victims per 1,000 pop) FY10	No repeat maltreatment	FY10 Entry Rate	% Change in Entries: most recent 2 years	FY10 In Care Rate (<18)	% Change # in Care: most recent 2 years (<18)	% of children claiming IV-E	2010 % in relative care (<18)	2010 % in congregate care (group, shelter, institution) (<18)	% in Congregate Care among ages 0-10 (in care on 9/30/10)	2010 % with APPLA as Case Plan Goal (<18)
Alabama	27.4%	8.3	98.8%	2.7	5.8%	4.8	-2.1%	36.0%	12.5%	17.6%	2.6%	14.3%
Alaska	14.8%	15.4	92.9%	4.9	-3.8%	10.0	-3.2%	46.5%	24.8%	5.0%	1.1%	2.7%
Arizona	25.0%	3.5	96.7%	4.4	12.4%	5.6	16.7%	42.5%	36.4%	11.6%	1.7%	8.2%
Arkansas	27.3%	16.5	93.8%	5.6	-6.3%	5.4	-1.1%	43.4%	14.8%	20.5%	8.6%	6.8%
California	22.0%	8.1	93.2%	3.4	-9.5%	5.8	-14.4%	49.0%	28.9%	30.4%	1.7%	16.2%
Colorado	17.1%	9.1	95.7%	4.6	-14.6%	4.8	-12.0%	32.5%	15.6%	12.3%	2.8%	13.0%
Connecticut	12.8%	12.4	92.6%	3.0	-8.7%	5.5	-17.2%	39.8%	13.4%	26.7%	6.1%	21.0%
DC	31.1%	23.4	94.1%	6.5	-9.9%	13.7	-15.6%	44.3%	18.0%	12.6%	3.1%	8.3%
Delaware	17.8%	10.3	97.1%	1.9	-35.4%	3.5	-20.5%	20.0%	9.7%	13.5%	1.7%	27.6%
Florida	23.6%	12.4	92.8%	3.4	13.7%	4.5	2.1%	14.6%	43.2%	13.7%	3.3%	7.1%
Georgia	25.0%	7.7	97.2%	2.1	11.6%	4.7	-6.9%	45.6%	14.4%	19.1%	3.2%	8.5%
Hawaii	14.7%	6.0	97.6%	3.4	-24.0%	4.2	-25.3%	35.3%	46.8%	9.3%	3.3%	5.5%
Idaho	19.8%	3.8	97.0%	3.3	1.9%	3.4	-5.1%	60.3%	26.9%	9.7%	2.0%	6.8%
Illinois	19.4%	8.3	93.4%	1.6	-8.3%	4.8	1.9%	33.1%	38.1%	9.0%	1.4%	11.3%
Indiana	21.6%	13.4	93.2%	5.8	-20.9%	7.8	-10.0%	38.7%	30.9%	13.6%	2.0%	5.6%
Iowa	16.2%	16.8	90.7%	6.4	-9.2%	9.0	-3.5%	30.9%	22.5%	20.4%	1.7%	12.2%
Kansas	18.1%	2.1	97.3%	5.0	8.8%	8.4	-4.4%	27.2%	25.7%	6.5%	0.9%	7.4%
Kentucky	26.1%	16.8	94.7%	5.4	-5.0%	6.9	-5.9%	43.7%	8.6%	17.8%	3.4%	5.7%
Louisiana	27.4%	7.4	95.4%	2.9	4.2%	3.9	-4.6%	46.8%	21.7%	11.1%	0.9%	6.9%
Maine	18.2%	12.1	93.8%	2.7	-27.8%	5.6	-22.5%	45.6%	26.2%	8.6%	2.4%	8.6%
Maryland	13.1%	9.7	96.6%	2.1	4.8%	4.5	-19.5%	32.5%	33.6%	13.6%	1.6%	13.9%
Mass	14.4%	17.0	91.5%	3.8	-13.5%	6.2	-10.5%	28.9%	18.0%	18.4%	4.3%	6.5%
Michigan	23.4%	13.8	91.7%	3.4	-5.4%	6.6	-15.0%	26.4%	36.0%	12.9%	0.7%	6.8%
Minnesota	15.0%	3.5	95.0%	4.4	-2.2%	4.0	-6.7%	33.8%	17.3%	24.8%	4.0%	7.3%
Mississippi	32.4%	9.6	94.0%	3.2	13.9%	4.6	10.4%	26.9%	28.3%	15.9%	4.0%	4.5%
Missouri	21.0%	3.7	97.3%	4.0	5.3%	6.3	8.0%	36.8%	22.8%	15.8%	4.7%	8.1%
Montana	21.1%	6.3	96.3%	4.3	-7.3%	7.7	8.1%	39.9%	32.7%	12.7%	5.1%	5.5%
N. Carolina	24.6%	9.6	97.5%	2.0	0.6%	3.8	-9.7%	39.1%	24.8%	10.8%	2.1%	0.2%
N. Dakota	15.7%	7.8	n/a	5.3	-15.9%	7.3	-14.0%	36.8%	10.5%	24.4%	2.9%	7.8%
N. Hamp	10.8%	2.9	97.2%	1.7	1.7%	2.6	-29.9%	44.3%	18.3%	17.2%	5.3%	10.9%
National	21.6%	9.2	93.7%	3.3	-8.2%	5.2	-5.1%	40.7%	26.0%	14.5%	2.8%	9.5%
Nebraska	17.3%	10.1	92.1%	7.3	-0.1%	10.9	-4.4%	16.5%	22.5%	19.9%	1.6%	2.4%
Nevada	21.3%	6.8	94.5%	4.2	-4.5%	7.0	-3.7%	47.8%	33.7%	5.6%	1.5%	8.0%
New Jersey	14.3%	4.4	94.3%	2.3	-6.0%	3.5	-17.3%	50.3%	35.6%	9.8%	2.4%	9.8%
New Mexico	28.5%	10.7	91.7%	3.4	-19.5%	3.6	-15.7%	46.0%	17.1%	5.6%	2.1%	5.6%
New York	21.5%	17.4	87.7%	2.7	-14.6%	5.2	-11.5%	49.2%	21.2%	16.0%	1.7%	4.8%
Ohio	23.1%	11.5	93.0%	3.3	13.8%	4.4	1.0%	68.3%	13.4%	13.4%	1.1%	10.1%
Oklahoma	24.4%	7.8	94.1%	4.6	1.3%	8.5	-5.9%	46.8%	28.6%	9.8%	3.4%	5.4%
Oregon	21.7%	n/a	n/a	5.5	5.7%	9.7	-1.3%	49.6%	26.0%	4.3%	0.8%	16.8%
Pennsylvania	18.9%	1.3	97.4%	3.6	-9.6%	5.1	-17.3%	51.0%	23.2%	20.5%	1.5%	6.8%
Puerto Rico	n/a	11.4	97.3%	0.9	-50.2%	4.3	-29.3%	11.2%	29.5%	10.6%	9.6%	15.4%
Rhode Island	19.9%	14.5	90.2%	6.0	-16.5%	8.6	-18.8%	27.1%	24.5%	34.5%	8.5%	10.9%
S. Carolina	26.0%	10.9	96.8%	3.1	-21.0%	4.1	-23.6%	39.6%	6.7%	22.0%	9.8%	13.9%
S. Dakota	19.4%	6.8	95.4%	7.2	7.7%	7.3	-0.3%	36.4%	16.7%	21.5%	6.7%	11.6%
Tennessee	25.9%	5.9	96.7%	4.2	10.6%	4.3	14.2%	31.8%	7.7%	16.7%	0.8%	0.8%
Texas	25.7%	9.4	97.2%	2.3	33.2%	4.2	13.1%	50.4%	29.3%	16.9%	7.6%	9.5%
Utah	15.9%	14.8	93.1%	2.6	-1.1%	3.1	-1.1%	36.9%	20.5%	15.4%	2.3%	16.6%
Vermont	15.9%	5.2	98.4%	4.3	19.7%	7.0	-5.4%	47.6%	14.9%	20.5%	7.3%	9.1%
Virginia	14.6%	3.5	97.6%	1.4	-1.9%	2.8	-19.2%	48.5%	5.8%	15.5%	2.2%	22.6%
Washington	18.2%	4.2	93.7%	4.0	-4.9%	6.8	-13.5%	38.8%	32.9%	4.4%	0.9%	4.6%
West Virginia	25.7%	10.2	95.6%	7.3	11.2%	10.5	0.5%	35.3%	13.1%	27.5%	2.7%	2.7%
Wisconsin	19.0%	3.5	94.4%	3.4	-2.5%	4.9	-4.3%	33.9%	30.4%	13.8%	1.1%	9.8%
Wyoming	14.9%	5.5	98.0%	7.4	-12.6%	7.4	-22.9%	18.8%	20.4%	30.4%	3.5%	2.8%

State Name	FY10 % in care ages 0-5	FY10 % in care ages 6-12	FY10 % in care ages 13-17	FY10 % in care ages 18-21 (reported in AFCARS)	C4.1: In care <1yr but >8 days, with two or fewer placements	% reunified in 12 months (2010 c1.3 entry cohort)	% achieving perm the following year (among those already in care 2 years or more, 2010 c3.1)	% re-entering care within 12 months (of those reunified, 2010 c1.4)	Of all FY10 exits: % reunified/perm relative placement	Of all FY10 exits: % adopted	Of all FY10 exits: % guardianship	Of all FY10 exits: % Aged Out	FY10 # children aged out (ages 17-23)
Alabama	34.2%	28.4%	33.0%	4.4%	78.5	41.2%	24.7%	7.7%	66.8%	19.4%	0.0%	10.0%	273
Alaska	43.9%	33.3%	20.5%	2.4%	91.5	32.1%	38.9%	6.8%	50.5%	37.4%	4.0%	5.1%	44
Arizona	45.5%	28.4%	26.1%	0.0%	86.1	30.2%	39.8%	17.8%	50.0%	28.7%	8.1%	9.2%	654
Arkansas	43.0%	30.5%	26.5%	0.0%	75.1	62.2%	28.9%	11.1%	73.4%	15.6%	2.5%	8.0%	294
California	33.2%	26.6%	36.2%	4.0%	82.2	40.0%	22.0%	12.6%	56.7%	18.5%	6.5%	14.1%	4,558
Colorado	26.0%	19.4%	39.5%	15.2%	88.1	56.7%	25.0%	13.4%	65.9%	15.2%	3.8%	10.2%	593
Connecticut	31.2%	22.8%	45.3%	0.7%	86.3	36.3%	21.5%	12.8%	45.3%	21.5%	9.5%	17.9%	464
DC	23.2%	24.3%	28.2%	24.3%	77.6	29.7%	20.2%	12.1%	47.6%	16.9%	9.4%	24.6%	189
Delaware	28.0%	25.1%	45.2%	1.6%	84.0	36.4%	18.0%	7.1%	45.0%	14.8%	17.7%	21.0%	94
Florida	46.8%	27.7%	25.3%	0.2%	85.0	36.8%	36.3%	14.1%	43.1%	23.2%	24.1%	9.4%	1,341
Georgia	38.7%	27.8%	33.5%	0.0%	73.4	44.9%	38.8%	6.1%	63.0%	18.3%	7.1%	9.1%	568
Hawaii	39.2%	30.1%	30.6%	0.2%	88.8	45.7%	36.8%	13.4%	64.3%	17.1%	7.4%	9.6%	115
Idaho	38.6%	33.4%	27.9%	0.1%	86.9	56.7%	49.2%	11.0%	61.1%	23.1%	6.9%	7.3%	96
Illinois	36.8%	27.1%	21.3%	14.8%	81.0	16.6%	20.4%	9.6%	42.5%	28.3%	7.3%	19.9%	845
Indiana	42.1%	29.6%	26.5%	1.9%	87.5	42.6%	34.4%	11.1%	62.5%	16.7%	10.5%	4.2%	361
Iowa	34.4%	24.4%	39.7%	1.5%	87.1	44.6%	27.9%	16.0%	65.5%	17.0%	6.2%	11.2%	495
Kansas	35.1%	29.9%	34.9%	0.6%	82.1	34.4%	30.5%	8.8%	53.8%	21.7%	7.5%	14.3%	451
Kentucky	33.7%	25.9%	38.4%	2.0%	87.9	47.5%	29.8%	12.2%	68.2%	15.0%	0.7%	15.4%	768
Louisiana	43.6%	29.4%	26.9%	0.1%	76.8	49.0%	38.3%	9.8%	73.3%	17.6%	1.4%	6.7%	244
Maine	46.2%	27.5%	27.5%	0.5%	88.3	30.0%	29.0%	12.0%	43.6%	32.4%	7.8%	15.7%	130
Maryland	28.8%	26.5%	42.8%	1.9%	87.8	26.4%	19.3%	13.4%	55.4%	20.0%	1.2%	21.1%	761
Mass	30.1%	25.6%	44.3%	0.1%	74.1	50.4%	22.9%	15.3%	65.5%	11.9%	4.5%	17.1%	1,012
Michigan	36.5%	25.8%	31.5%	6.2%	84.3	22.7%	32.2%	3.8%	53.9%	27.9%	3.6%	9.9%	907
Minnesota	28.7%	24.7%	45.2%	1.4%	85.2	57.0%	21.2%	24.5%	65.7%	11.0%	9.2%	10.8%	607
Mississippi	35.6%	29.9%	27.3%	5.2%	80.9	48.3%	33.9%	7.2%	73.1%	16.2%	4.3%	3.8%	79
Missouri	37.5%	27.1%	28.1%	9.3%	78.7	34.7%	29.3%	10.9%	59.8%	24.1%	4.8%	8.6%	395
Montana	40.7%	34.8%	23.6%	0.8%	85.5	32.1%	26.0%	15.1%	60.3%	21.1%	4.4%	10.9%	94
Montana	38.7%	28.9%	23.6%	4.1%	92.1	23.6%	31.1%	2.0%	46.8%	27.3%	12.7%	11.6%	545
N. Carolina	26.5%	25.0%	45.1%	3.4%	82.9	34.4%	23.8%	13.3%	67.2%	12.1%	0.0%	9.6%	68
N. Dakota	28.6%	24.5%	38.6%	8.2%	82.9	48.2%	32.4%	20.8%	47.4%	30.6%	5.1%	9.3%	49
N. Hamp	36.6%	27.3%	31.7%	4.5%	<i>n/a</i>	40.5%	30.8%	12.4%	58.7%	20.8%	6.4%	11.0%	26,943
Nebraska	30.6%	23.0%	38.9%	7.5%	84.9	41.7%	37.7%	12.9%	63.9%	13.4%	8.8%	9.8%	301
Nevada	45.5%	32.6%	21.6%	0.3%	82.9	43.8%	40.1%	6.8%	63.5%	22.8%	2.8%	8.9%	251
New Jersey	44.8%	24.9%	26.7%	3.6%	85.6	45.2%	38.2%	10.2%	60.2%	26.8%	4.7%	6.2%	299
New Mexico	42.6%	36.3%	20.9%	0.1%	82.3	36.9%	42.5%	8.4%	68.3%	22.8%	0.9%	5.2%	94
New York	29.7%	25.2%	31.4%	13.7%	89.2	39.8%	26.7%	14.3%	67.0%	17.0%	0.0%	11.1%	1,366
New York	38.7%	25.4%	35.3%	0.5%	90.8	47.8%	23.9%	13.0%	62.7%	15.2%	3.4%	15.9%	1,331
Ohio	47.1%	33.7%	19.1%	0.1%	69.5	30.8%	36.4%	6.3%	51.2%	30.5%	7.7%	7.4%	379
Oregon	39.2%	30.9%	24.5%	5.5%	87.4	42.9%	25.3%	13.0%	64.0%	18.4%	4.7%	5.8%	239
Pennsylvania	31.6%	22.4%	36.1%	9.9%	85.3	45.8%	39.5%	25.7%	55.7%	22.1%	8.9%	8.2%	876
Puerto Rico	19.7%	33.9%	38.9%	7.5%	99.9	11.7%	7.3%	1.4%	85.4%	11.3%	0.1%	0.7%	4
Rhode Island	28.0%	20.4%	42.3%	9.3%	86.2	43.5%	24.5%	23.4%	63.2%	14.6%	7.6%	8.9%	111
S. Carolina	35.8%	29.7%	33.7%	0.9%	76.8	62.3%	26.4%	8.3%	74.1%	14.0%	1.6%	9.7%	362
S. Dakota	29.4%	33.5%	23.9%	1.3%	86.1	47.0%	44.1%	13.5%	60.6%	16.0%	5.5%	6.0%	82
Tennessee	49.3%	23.9%	43.9%	2.7%	80.7	55.8%	44.1%	13.5%	27.9%	16.0%	1.6%	9.1%	555
Texas	45.6%	31.4%	23.0%	0.0%	84.0	30.0%	27.9%	5.2%	51.3%	11.3%	1.9%	11.3%	1,530
Texas	29.3%	23.0%	39.8%	7.9%	80.9	35.6%	13.5%	11.7%	49.3%	27.0%	8.4%	10.0%	204
Utah	23.3%	22.6%	48.7%	5.5%	69.7	35.9%	28.9%	18.4%	56.6%	24.3%	2.8%	14.8%	96
Virginia	27.0%	27.3%	43.0%	2.7%	86.6	29.9%	31.8%	3.2%	47.6%	23.1%	0.0%	25.6%	780
Washington	46.1%	28.7%	23.1%	2.1%	85.5	31.8%	31.8%	15.6%	50.3%	30.1%	10.0%	8.5%	440
West Virginia	33.2%	26.0%	38.9%	1.9%	87.4	48.5%	44.8%	15.3%	67.6%	22.4%	5.3%	7.2%	63
Wisconsin	36.2%	27.1%	34.2%	2.6%	86.3	46.1%	31.8%	17.9%	62.2%	16.1%	8.7%	10.4%	449
Wyoming	29.4%	25.6%	41.1%	3.9%	86.6	57.7%	38.6%	14.8%	76.9%	6.7%	5.3%	3.8%	37

Nebraska DHHS
Children & Family Services
IV-E Demonstration Project, Penetration Rate Sub-Committee
July 2012

Youth Who are Passing the IV-E Income, Deprivation and Citizenship Requirements and are Failing IV-E Eligibility for Another Reason							
Source: Non-IV-E Report July 2, 2012							
Current Placement	(All)						
Values	Column Labels	Central	Eastern	Northern	Southeast	Western	Grand Total
Count of Youth		120	468	89	249	92	1018
Contrary to the Welfare		22.5%	8.8%	32.6%	12.9%	14.1%	13.9%
Reasonable Efforts		31.7%	10.3%	27.0%	18.5%	22.8%	17.4%
No Permanency Hearing		11.7%	29.7%	9.0%	8.4%	3.3%	18.2%
Age		0.8%	2.4%	0.0%	1.6%	1.1%	1.7%
Placement Facility		50.8%	48.7%	43.8%	57.4%	70.7%	52.7%
School Attendance		0.8%	0.6%	0.0%	0.0%	0.0%	0.4%
SSI		6.7%	11.1%	13.5%	12.4%	15.2%	11.5%
Youth may fail for more than one reason. Because of this duplication, the percent will not add up to 100%.							
Placement Facility Failures include youth placed in the YRTC and Detention.							

Nebraska DHHS, Children & Family Services
IV-E Eligibility and Reasons for Ineligibility with Trend Lines
January – July 2012

Row Labels	01/02/2012	02/06/2012	03/05/2012	04/02/2012	05/07/2012	06/04/2012	07/02/2012	
IV-E								
Number	1324	1379	1408	1399	1404	1401	1327	
Percent	33.11%	33.99%	33.71%	33.43%	33.34%	34.09%	33.22%	
Non IV-E								
Number	2675	2678	2769	2786	2807	2709	2667	
Percent	66.89%	66.01%	66.29%	66.57%	66.66%	65.91%	66.78%	
Total Number	3999	4057	4177	4185	4211	4110	3994	
Total Percent	100.00%	100.00%	100.00%	100.00%	100.00%	100.00%	100.00%	

Values	Column Lab	01/02/2012	02/06/2012	03/05/2012	04/02/2012	05/07/2012	06/04/2012	07/02/2012	Trend
Number of Youth		2675	2678	2769	2786	2807	2709	2667	
Contrary to Welfare Fails		438	395	392	372	364	357	352	
Contrary to Welfare Percent		16%	15%	14%	13%	13%	13%	13%	
Reasonable Efforts Fails		509	493	478	464	468	458	447	
Reasonable Effort Percent		19%	18%	17%	17%	17%	17%	17%	
No Permanency Finding Fails		202	190	195	207	201	198	187	
No Permanency Finding Percent		8%	7%	7%	7%	7%	7%	7%	
Deprivation Fails		548	540	588	594	585	575	553	
Deprivation Percent		20%	20%	21%	21%	21%	21%	21%	
Income Fails		1509	1537	1579	1592	1620	1587	1566	
Income Percent		56%	57%	57%	57%	58%	59%	59%	
Placement Facility Fails		802	798	844	837	830	782	759	
Placement Facility Percent		30%	30%	30%	30%	30%	29%	28%	
Specified Relative Fails		78	75	77	81	83	84	86	
Specified Relative Percent		3%	3%	3%	3%	3%	3%	3%	
School Attendance Fails		57	38	28	19	11	6	6	
Age Related Details Fails		19	33	35	37	36	35	27	
Age Related Details Percent		1%	1%	1%	1%	1%	1%	1%	
Undocumented Alien Fails		17	24	22	17	22	15	18	
Undocumented Alien Percent		1%	1%	1%	1%	1%	1%	1%	
SSI Income Fails		170	180	176	183	190	189	187	
SSI Income Percent		6%	7%	6%	7%	7%	7%	7%	

Nebraska DHHS, IV-E Demonstration Project, Penetration Rate Sub-Committee Eligibility

	IV-E	Non IV-E	Grand Total
Central			
Both OJS and HHS Ward			
#	0	5	5
%	0.00%	100.00%	100.00%
HHS Ward			
#	108	215	323
%	33.44%	66.56%	100.00%
HHS-OJS Ward			
#	4	97	101
%	3.96%	96.04%	100.00%
Central #	112	317	429
Central %	26.11%	73.89%	100.00%
Eastern			
Both OJS and HHS Ward			
#	6	23	29
%	20.69%	79.31%	100.00%
HHS Ward			
#	572	839	1411
%	40.54%	59.46%	100.00%
HHS-OJS Ward			
#	17	225	242
%	7.02%	92.98%	100.00%
Vol. Placement Agreement			
#	9	15	24
%	37.50%	62.50%	100.00%
Eastern #	604	1102	1706
Eastern %	35.40%	64.60%	100.00%
Northern			
Both OJS and HHS Ward			
#	0	3	3
%	0.00%	100.00%	100.00%
HHS Ward			
#	137	206	343
%	39.94%	60.06%	100.00%
HHS-OJS Ward			
#	1	102	103
%	0.97%	99.03%	100.00%
Police Hold			
#	0	1	1
%	0.00%	100.00%	100.00%
Northern #	138	312	450
Northern %	30.67%	69.33%	100.00%
Southeast			
Both OJS and HHS Ward			
#	16	33	49
%	32.65%	67.35%	100.00%
HHS Ward			
#	344	405	749
%	45.93%	54.07%	100.00%
HHS-OJS Ward			
#	13	206	219
%	5.94%	94.06%	100.00%
Vol. Placement Agreement			
#	2	1	3
%	66.67%	33.33%	100.00%
Southeast #	375	645	1020
Southeast %	36.76%	63.24%	100.00%
Western			
Both OJS and HHS Ward			
#	0	5	5
%	0.00%	100.00%	100.00%
HHS Ward			
#	92	213	305
%	30.16%	69.84%	100.00%
HHS-OJS Ward			
#	4	73	77
%	5.19%	94.81%	100.00%
Vol. Placement Agreement			
#	2	0	2
%	100.00%	0.00%	100.00%
Western #	98	291	389
Western %	25.19%	74.81%	100.00%
Total #	1327	2667	3994
Total %	33.22%	66.78%	100.00%

	Central	Eastern	Northern	Southeast	Western	State
Youth	317	1102	312	645	291	2667
Reasonable Efforts	102	120	83	99	43	447
Reasonable Efforts %	32%	11%	27%	15%	15%	17%
Contrary to Welfare	65	92	80	84	31	352
Contrary to Welfare %	21%	8%	26%	13%	11%	13%
Permanency Hearing	14	141	8	21	3	187
No Permanency Finding %	4%	13%	3%	3%	1%	7%
Deprivation	64	222	82	108	77	553
Deprivation %	20%	20%	26%	17%	26%	21%
Income	190	589	208	383	196	1566
Income %	60%	53%	67%	59%	67%	59%
Placement Facility	83	307	62	209	98	759
Placement Facility %	26%	28%	20%	32%	34%	28%
Resources	0	0	0	0	0	0
Resources %	0%	0%	0%	0%	0%	0%
School Attendance	1	4	0	1	0	6
School Attendance %	0%	0%	0%	0%	0%	0%
Specified Relative	13	31	10	27	5	86
Specified Relative %	4%	3%	3%	4%	2%	3%
SSI Income	20	71	20	49	27	187
SSI Income %	6%	6%	6%	8%	9%	7%
Undocumented Alien	0	14	2	2	0	18
Undocumented Alien %	0%	1%	1%	0%	0%	1%
Age Related Details	2	15	1	8	1	27
Age Related Details %	1%	1%	0%	1%	0%	1%